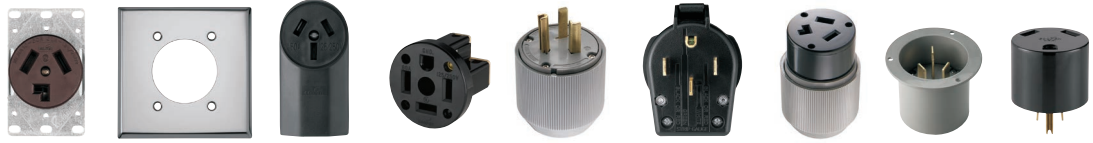


Straight blade power devices - 20, 30, 50 & 60A



Rating: Amps V/AC	Receptacle/ plug NEMA configuration	Flush receptacles	Wallplates	Surface receptacles	Panel mount receptacles	Plugs	Angle plugs	Connectors	Flanged inlets	Adapters
-------------------------	---	----------------------	------------	------------------------	----------------------------	-------	-------------	------------	-------------------	----------

2-pole, 3-wire grounding

30A 125V		Commercial: 1233 (Brown) Industrial: 5716N (Black)	Standard size: 39CH, 68, 2068, 2168, 93221, 93227 Mid-size: 5068, PJ703, PJ724			Industrial: 5717N (Gray)	Commercial: S41 (Black) Industrial: 5717AN (Gray)	Industrial: 6716N (Gray & Black)	Industrial: 5717NFI (Gray)		
30A 125V		Commercial: 1263 (Black)			Commercial: U1263 (Black)		Commercial: 83 (Black)			Commercial: 1264 (Receptacle to NEMA 5-15/5-20 plug) (Black)	
30A 250V		Commercial: 1234 (Black) Industrial: 5700N (Black)			Commercial: 1232 (Black)		Industrial: 5701N (Gray)	Commercial: S42 (Black) Industrial: 5701AN (Gray)	Industrial: 6700N (Gray & Black)	Industrial: 5701NFI (Gray)	
30A 277V		Industrial: 5795N (Black)					Industrial: 5703N (Gray)	Industrial: 5703AN (Gray)	Industrial: 6795N (Gray & Black)	Industrial: 5703NFI (Gray)	
50A 125V		Commercial: 1253 (Black)			Commercial: 1251 (Black)		Industrial: 5712N (Gray)	Commercial: S41 (Black) Industrial: 5712AN (Gray)	Industrial: 6711N (Gray & Black)	Industrial: 5712NFI (Gray)	
50A 250V		Commercial: 1254 (Black) Industrial: 5709N (Black)			Commercial: 1252 (Black)		Industrial: 5710N (Gray)	Commercial: S42 (Black) Industrial: 5710AN (Gray)	Industrial: 6709N (Gray & Black)	Industrial: 5710NFI (Gray)	
50A 277V							Industrial: 5705N (Gray)	Industrial: 5705AN (Gray)	Industrial: 6796N (Gray & Black)	Industrial: 5705NFI (Gray)	

3-pole, 3-wire non-grounding

20A 125/250V		Commercial: 805 (Ivory)				Industrial: 9151N (Gray) Commercial: 2836 (Armed PVC) (Yellow)				
30A 125/250V dryer		Commercial: 38B (Brown)	Standard size: 39CH, 68, 2068, 2168, 93221, 93227	Commercial: 125 (Black)		Industrial: 9337N (Gray)	Commercial: S80 (Black) Industrial: 9352AN (Gray)	Industrial: 9341N (Gray & Black)	Industrial: 9337NFI (Gray)	
50A 125/250V range		Commercial: 32B (Brown) Industrial: 7985N (Black)	Mid-size: 5068, PJ703, PJ724 Standard Size: 192	Commercial: 112 (Black)		Industrial: 4524N (Gray)	Commercial: S80 (Black) Industrial: 7952AN (Gray)	Industrial: 4526N (Gray & Black)	Industrial: 4524NFI (Gray)	

Power device dimensional information: B-20; Specification information: B-25-B-27
Compliances, specifications and availability are subject to change without notice.

All products on this page are RoHS compliant - Page Q-32